

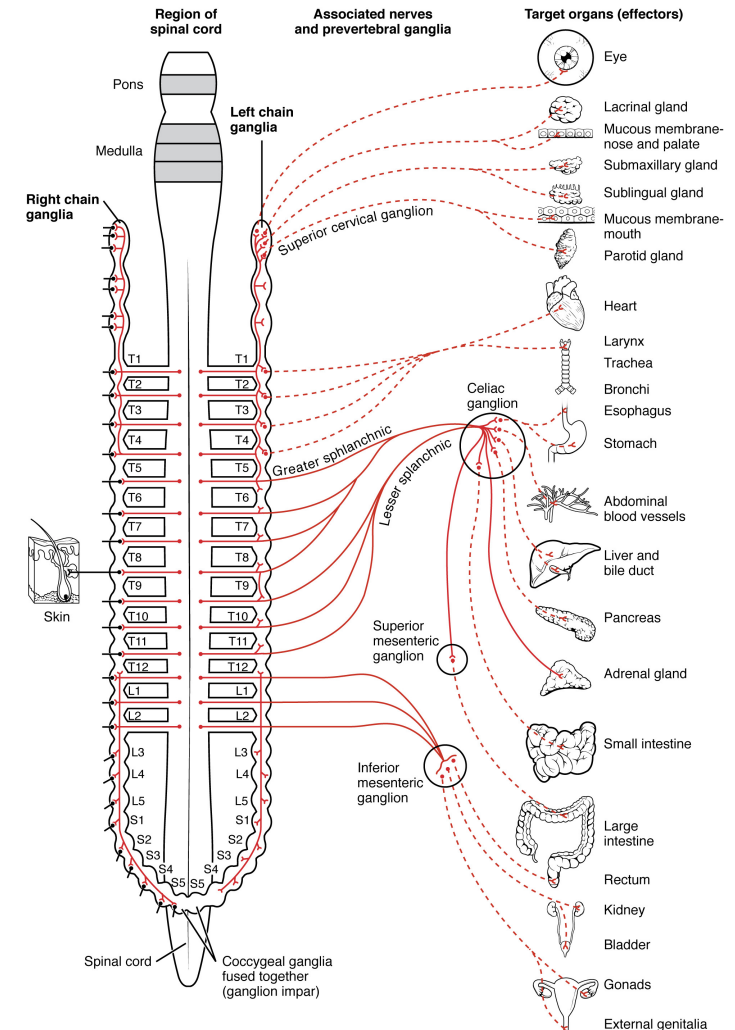
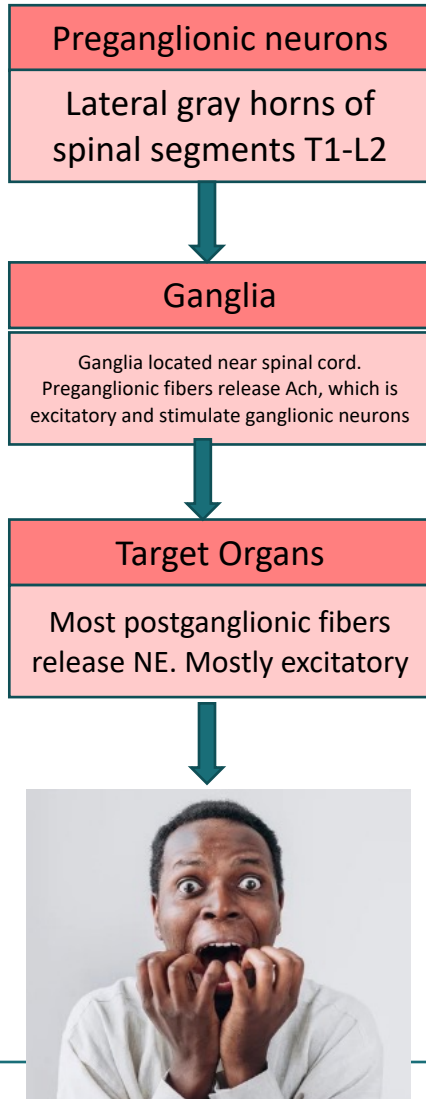
Module 14 LO2

Summarize Anatomical and Functional Characteristics of Sympathetic NS

Dr. Lisa Brinn

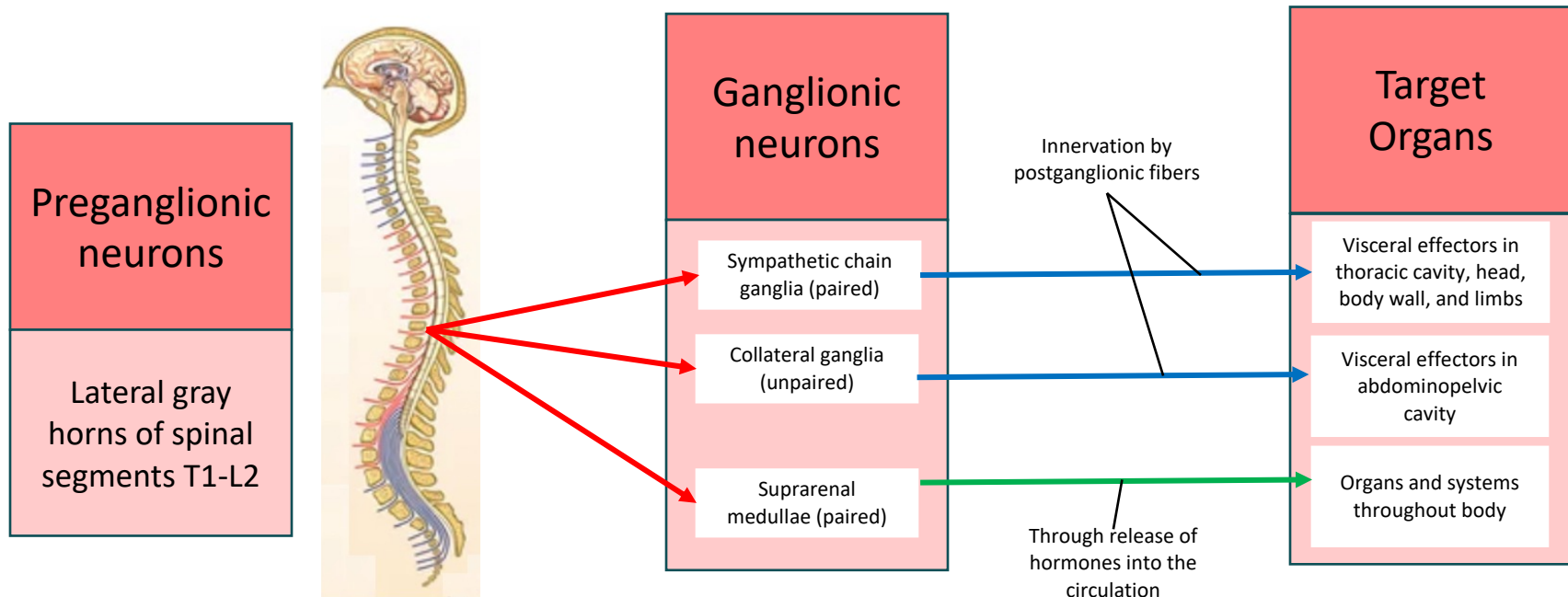
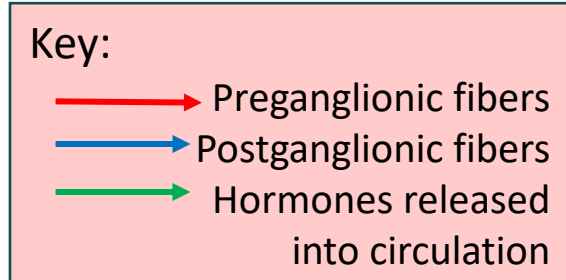
lbrinn@fiu.edu

2. Sympathetic Nervous System

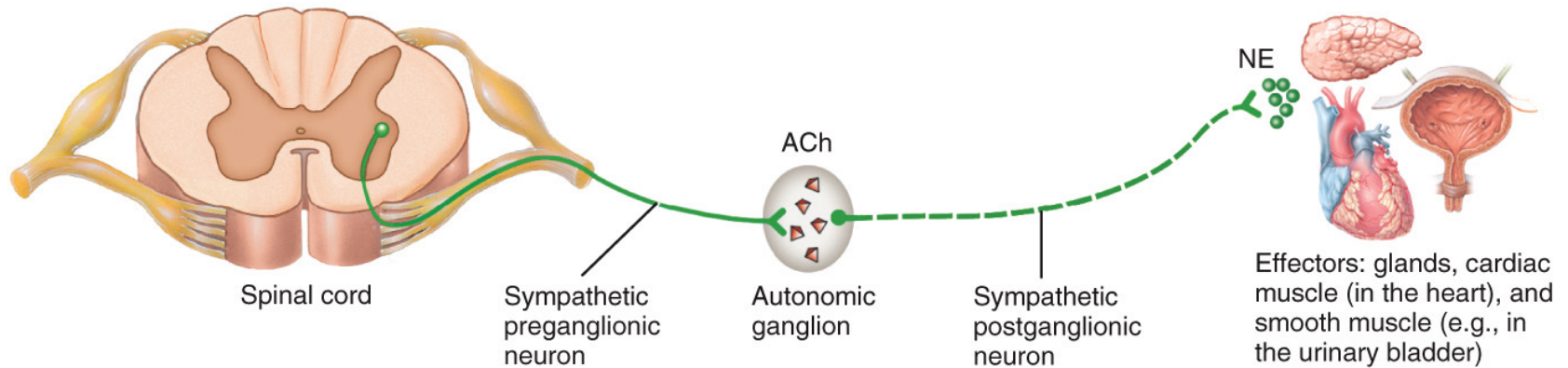


Sympathetic Divisions

- Consists of the following:
 1. Preganglionic neurons
 2. Neuronal cell bodies
 3. Specialized neurons in suprarenal gland

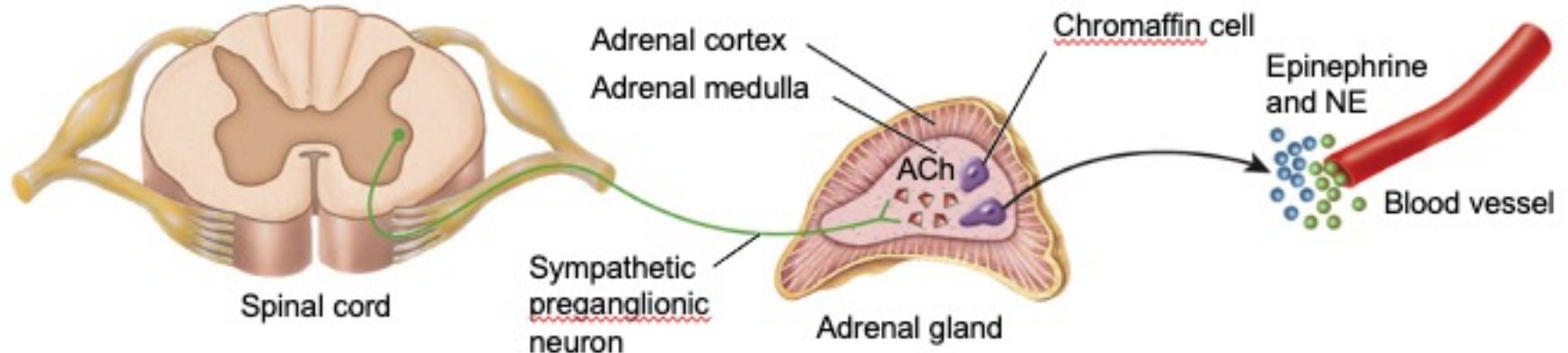


Sympathetic Motor Pathway



Autonomic Motor Pathway to Adrenal Medulla

- Chromaffin cells are modified sympathetic postganglionic neurons that release the hormones epinephrine and norepinephrine (NE) into the blood.



Sympathetic Postganglionic Nerve Endings

- Autonomic postganglionic neurons release neurotransmitters from varicosities, which are swollen regions found at the ends of axon terminals

